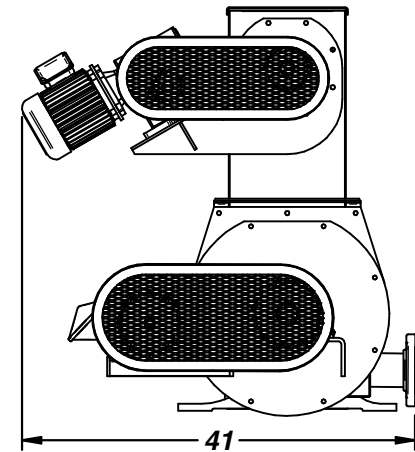
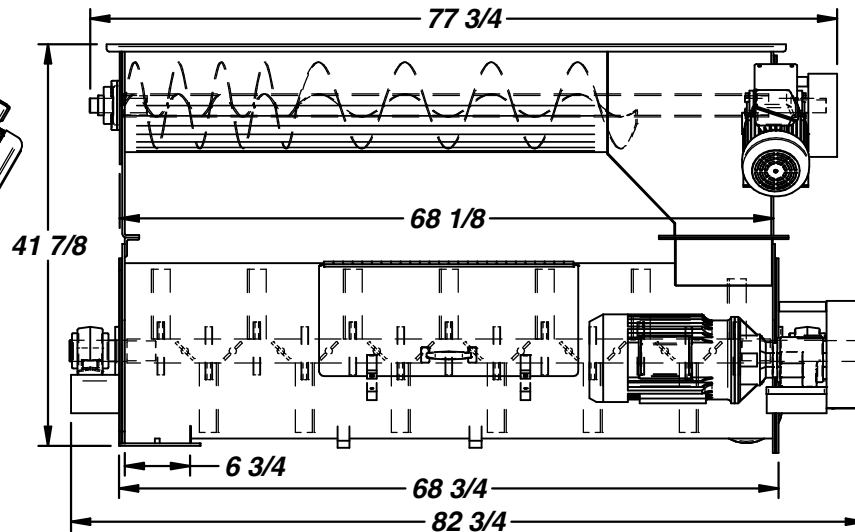
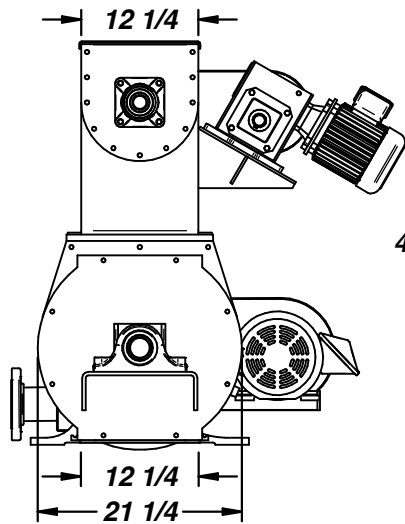
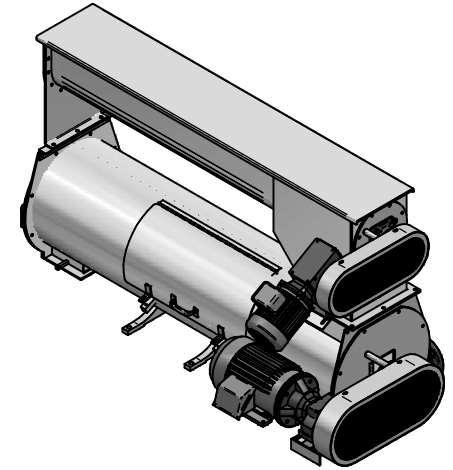
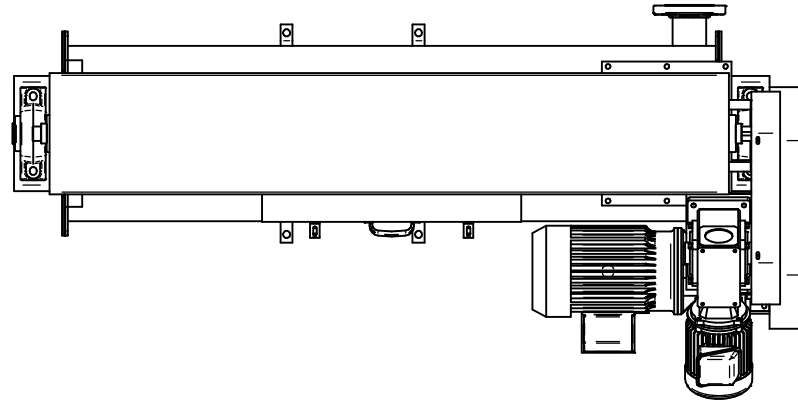


PROCESSCO

DESCRIPTION: CENTURY FEEDER/CONDITIONER			
MATERIAL: As Noted	DWG. #: DETAILS & ASSEMBLIES	REV. 0	
SCALE: A/N		DATE: 06/13/2011	SHEET 1 of 2

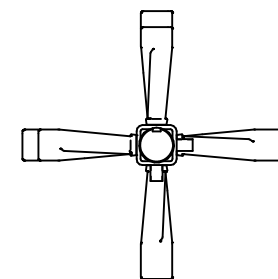
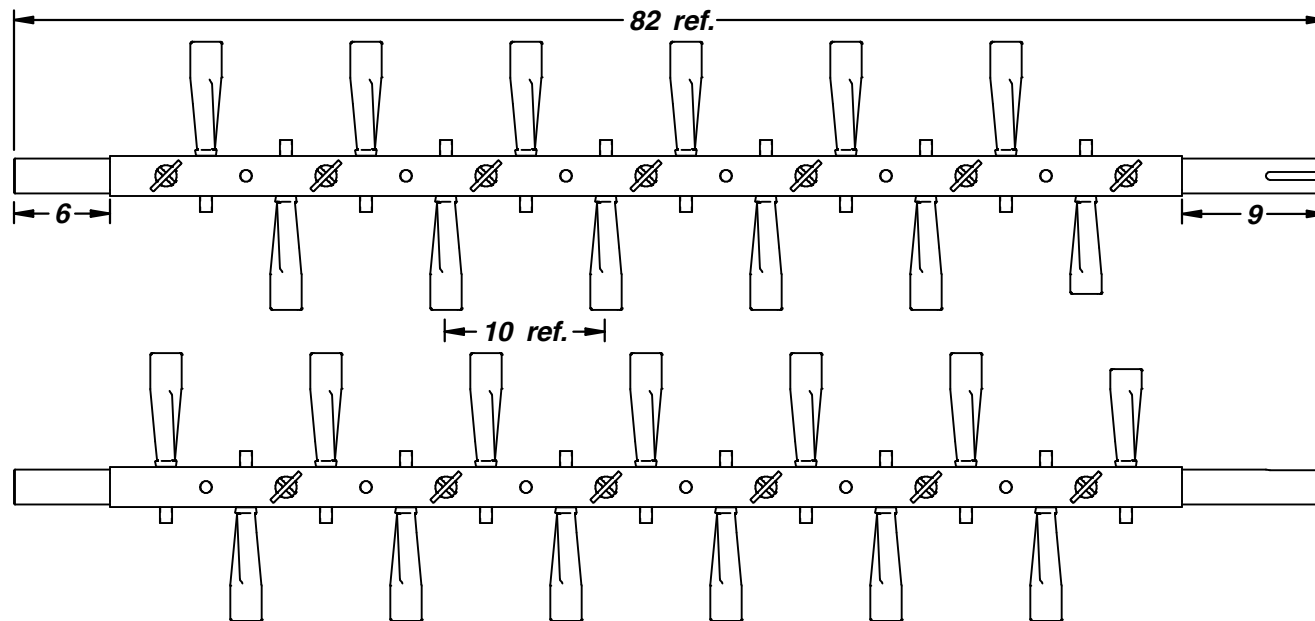
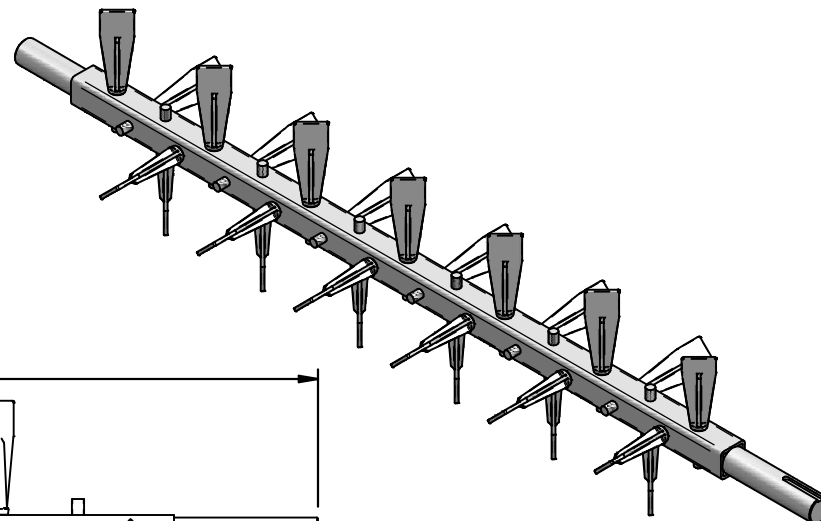
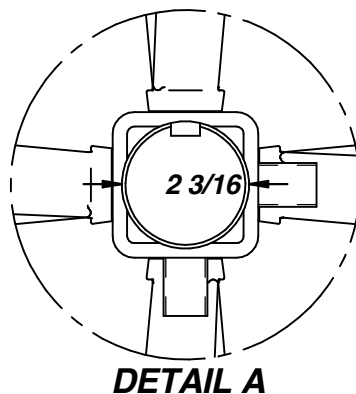
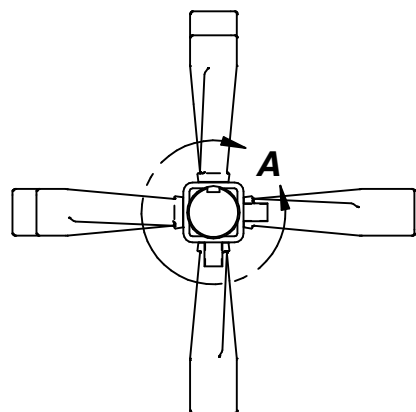
UNLESS OTHERWISE NOTED
STANDARD TOLERANCES (PLUS or MINUS)
FRACTIONAL = 1/32"
XX = .020"
XXX = .005"
XXXX = .001"
ANGULAR = 1/2 deg.



PROCESSCO

DESCRIPTION: CENTURY FEEDER/CONDITIONER		
MATERIAL: As Noted	DWG. #: DETAILS & ASSEMBLIES	REV. 0
SCALE: A/N	DATE: 06/13/2011	SHEET 2 of 2

UNLESS OTHERWISE NOTED
STANDARD TOLERANCES (PLUS or MINUS)
FRACTIONAL = 1/32"
XX = .020"
XXX = .005"
XXXX = .001"
ANGULAR = 1/2 deg.



PROCESSCO

DESCRIPTION: CENTURY FEEDER/CONDITIONER			
MATERIAL: As Noted	DWG. #: COND. PICK BAR ASSY.	REV. 0	
SCALE: A/N	DATE: 11/13/2014	SHEET 1 of 2	

UNLESS OTHERWISE NOTED
STANDARD TOLERANCES (PLUS or MINUS)
FRACTIONAL = 1/32"
XXX = .020"
XXX = .005"
XXXX = .001"
ANGULAR = 1/2 deg.